

EasyRx

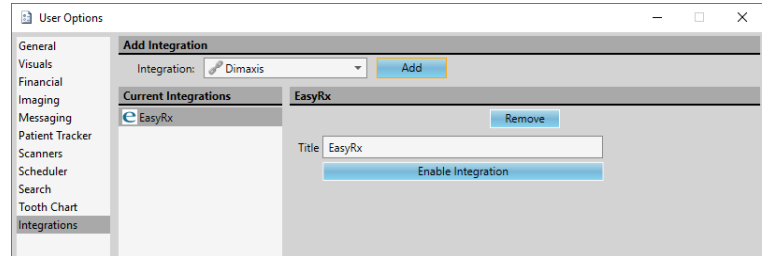
Integration Instructions for Edge Cloud



Enable the EasyRx integration to connect your Edge Cloud practice data with your EasyRx Dashboard.

Setup

To enable the EasyRx integration, open the User Options from the Tools tab of the Home ribbon bar. Click Integrations along the left column. Use the dropdown under Add Integration to select EasyRx; click Add. Under the EasyRx heading, click Enable Integration.



The EasyRx webpage will open. Enter your EasyRx credentials to log in and register the integration.

Use

You can open the EasyRx Dashboard from a patient's record by clicking the dropdown arrow by Integrations in the Patient tab of the Patient ribbon bar. This will open to the patient's record, or the option to create the patient if they don't exist in EasyRx.

Contact

EasyRx
EasyRx
www.easyrxortho.com
888.340.3751

Edge Cloud
Ortho2
www.ortho2.com
800.346.4504 or 515.233.1026