

Anatomage InVivoDental & TxSTUDIO

Integration Instructions for Edge Cloud



InVivoDental™ volumetric imaging software and TxSTUDIO from Anatomage reads DICOM data from Cone Beam CT machines. This integration allows you to start the InVivoDental or TxSTUDIO software from an Edge Cloud patient record and go directly to that patient's images.

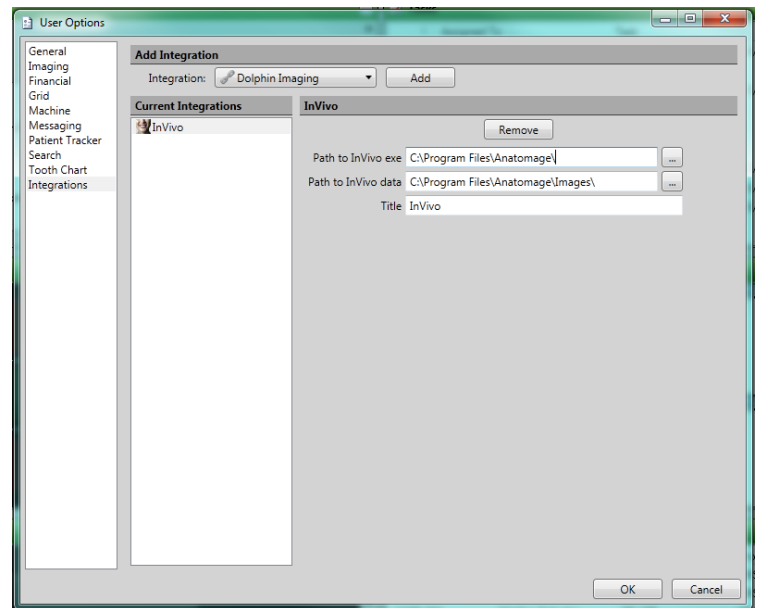
Setup

Before you begin, be sure both Edge Cloud and InVivo or TxSTUDIO software are installed properly. The current version of InVivoDental is called Invivo5.

Edge Cloud Setup

These steps must be followed on each station where you would like to use the integration.

- 1 From the Edge Cloud Home ribbon, click **User Options** in the Tools section.
- 2 Select Integrations along the left.
- 3 Under Add Integration, select InVivo from the Integration dropdown menu.
- 4 Click **Add**.
- 5 For the Path to InVivo exe field, use [...] to navigate to the InVivo.exe file and select it. If you are using TxSTUDIO, navigate to the TxSTUDIO.exe file and select it.
- 6 For the Path to InVivo data field, use [...] to navigate to the directory in which the .amg or .inv files are stored.
- 7 Under Title, type a name for this integration. InVivo is used by default. You may change it to TxSTUDIO if you are using that product.
- 8 Click **OK**.

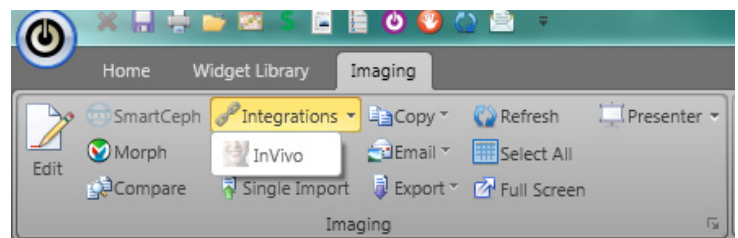


InVivoDental/TxSTUDIO Setup

Patients will need to be entered in the InVivo or TxSTUDIO database with the same patient ID they are assigned in Edge Cloud.

Using the Integration

With a patient loaded, open the patient's Imaging section and click the Integrations button in the Imaging ribbon bar. Select InVivo or TxSTUDIO to open the patient's record within the respective program.



Contact

Anatomage, Inc.

Anatomage, Inc.
111 N. Market Street, #800
San Jose, California 95113
www.anatomage.com
408.885.1474

Edge Cloud

Ortho2
1107 Buckeye Avenue
Ames, IA 50010
www.ortho2.com
800.346.4504 or 515.233.1026